

**St. John Vianney Catholic Church
Prince Frederick, MD 20678**

Facilities Committee

Parish Center Renovations

**Presentation to CCD, Pre-School and
Bereavement Representatives**

16 September 2008

Facilities Committee

Charter

The Facilities Committee was tasked in March 2008 to take charge of all projects and improvements in our parish.

Approach

- Facility Use Assessment
- User Recommendations
- Initial Committee Recommendations
- Comprehensive Facilities and Land Plan
- Implementation

Facilities Committee

Joe Allman

Barbara Fallin

Flo Ford

Jack McFadden

Sam Schiattareggia

Bill Stanton

George Sullivan

Facility Users

Work Camp

Youth Activities

CCD

First Communion, Confirmation

Land

Servers of Arimathea (Bereavement)

Family Life Center

Food Service

Safe Nights

Pre-School

Pastor

Drama Ministry

Girl Scouts

Boy Scouts

Cub Scouts

Choirs

Maintenance

Ladies Club

Patuxent Architects

Wallmark Service Co.

Meetings with facility users March 18 through May 27, 2008

Facilities Use Assessment

Servers of Arimathea

Discussed how meals are done for funerals.

Festival Room:

Smaller receptions

Kitchen works well, could use more refrigerator space.

Vianney Room

Average 75 people

Number 1 need is more countertop space for food preparation

Discussed removing soda machine, wall mounting microwave, commercial size microwave, shelves above countertops, expand kitchen by relocating the oven, additional warming equipment, dedicated storage space, additional electrical circuits in Vianney Room

Other issues discussed:

Refrigerator is used by pre-school

Need nicer coat rack

Women's bathroom heater doesn't work

Cleaners put floor mats on countertops when cleaning floor

Facilities Use Assessment

CCD Program

Classes held on Sunday 9:30 – 10:45 300 students K-5, 2 classes per grade

All rooms in Parish Center used, FLC Teen Room for
developmentally challenged

Monday 10 – Noon Adult Bible Study

6:15 – 7:30 60 students K-5, 1 class per grade

Wednesday 7:30-9pm 200 students

Parish Center all rooms used for grades 6 – 7

FLC all rooms used for grades 8 - 9

Confirmation Class: 2007: 36, 2008: 52

First Communion: 2007: 60, 2008: 61

Maximum class size: K-5: 20, 6-9: 30

All students accepted at requested class time

Improvement priorities: 1. Better room dividers (Vianney, Ares, Eculy)

2. Larger classrooms

3. FLC gym acoustic treatment

Facilities Use Assessment

Kitchens

Recent food service activities:

First Sunday Breakfast – average 220 people, higher food cost because of the limited cooking capabilities, difficult cleanup

CYBL & Summer Camp Snack Bar – kitchen functionality OK

Major catering events during past four years:

Dinner Theater 225 people

Ralph Fridgen Dinner 210 people

Fr. Daly's 20th Anniversary Dinner 250 people

Used Vianney Room kitchen for some cooking, moved food to FLC just before serving

Requested improvements to Family Life Center Kitchen:

Convert current stove to 6 burners

Add 6' grill

Add second oven

Remove pizza oven, replace with countertop and under counter refrigerator

Facilities Use Assessment

Kitchens

Requested Vianney Room Kitchen improvements:

Move cooking equipment to back section similar to FLC kitchen

Committee discussions:

Caterers using SJV facilities should be self sufficient, need better contract stating the rules they must follow.

Restrict access to FLC kitchen consumables and cooking tools when caterer or outside organizations using facility.

Limit SJV functions with meal service in FLC to 250 people based on kitchen capabilities, FLC foyer and gym space, bathrooms.

Don't let limited rental opportunities drive FLC kitchen and storage improvements

Facilities Use Assessment

Pre-School

Approved by Maryland Department of Education

Approved for 14 students based on available “free space” in classroom

With larger room, could expand to 16 students with current staff

2007/08 enrollment: 4 year olds: M W F, 14 morning, 10 afternoon

3 year olds: Tu Th, 11 morning, 9 afternoon

Requested the following facility improvements:

Playground fence, cited recent increase in broken equipment coinciding with field rentals for soccer

Integrated facility: classroom, bathroom, storage, office

Additional cabinets in classroom for more storage and better appearance

Willing to share space with CCD classes

Vianney Room Design

Patuxent Architects

Design guidance given to Patuxent Architects was to provide enhanced/upscale room for parish functions, and space for larger CCD classrooms.

The Patuxent Architects design provides for new 2000 sq. ft. banquet room at end of current Vianney Room with seating for 130, kitchen improvements, additional HVAC system for new space, table and chair storage room.

Discussed details of the proposed design and other alternatives.

Planning figures discussed were:

Banquet space: 15 sq. ft. per person

Elementary classrooms 30 sq. ft. per student, could be reduced for CCD class

New classroom construction \$100-125 per sq. ft.

Parish Center Improvements

Required for:

CCD Program

Pre-School Program

Parish Functions

Vianney Room Makeover

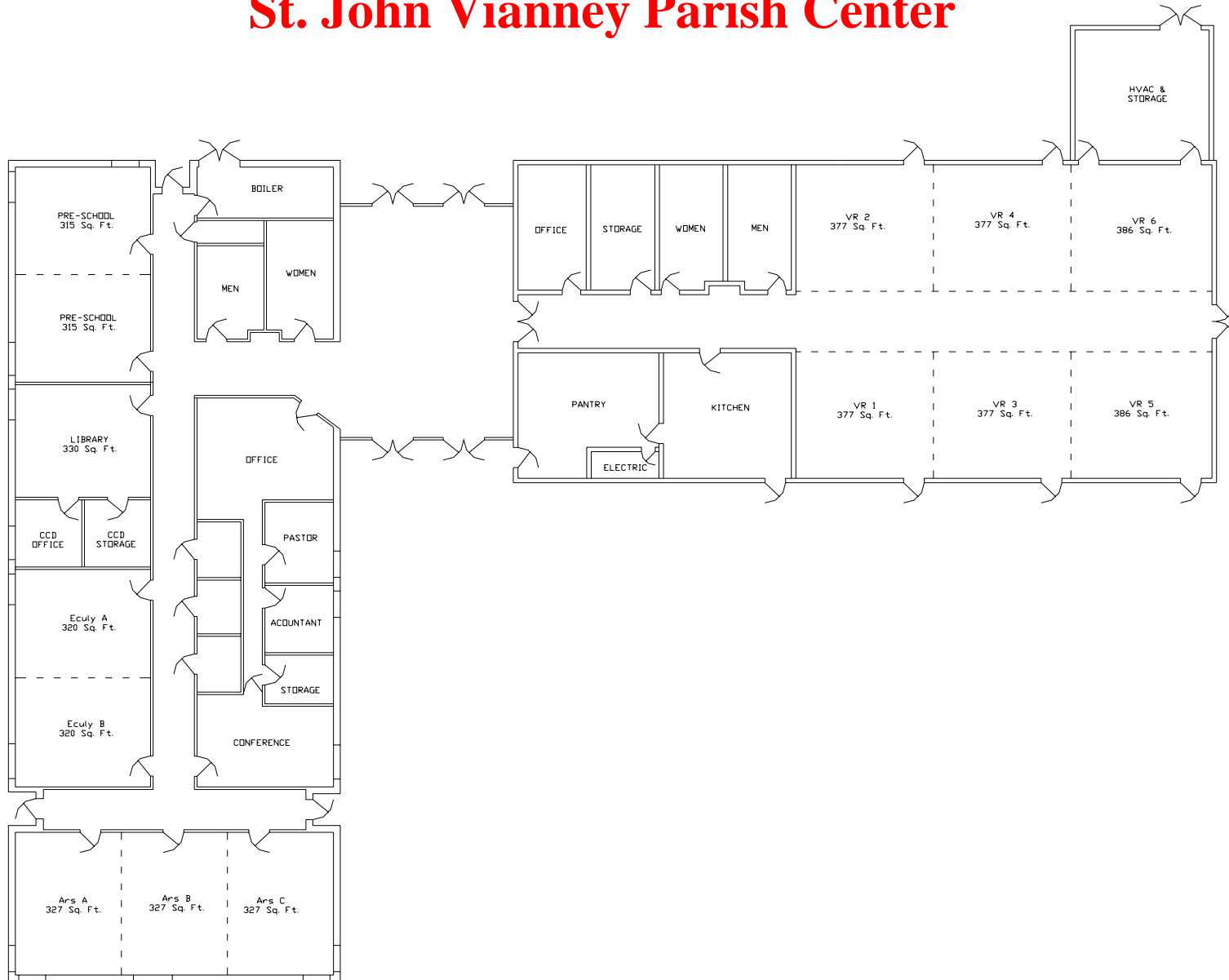
Kitchen Improvements

Parish Organizations

Dedicated Storage

Parish Administration

St. John Vianney Parish Center



CCD Classroom Sizes, Capacities & Usage

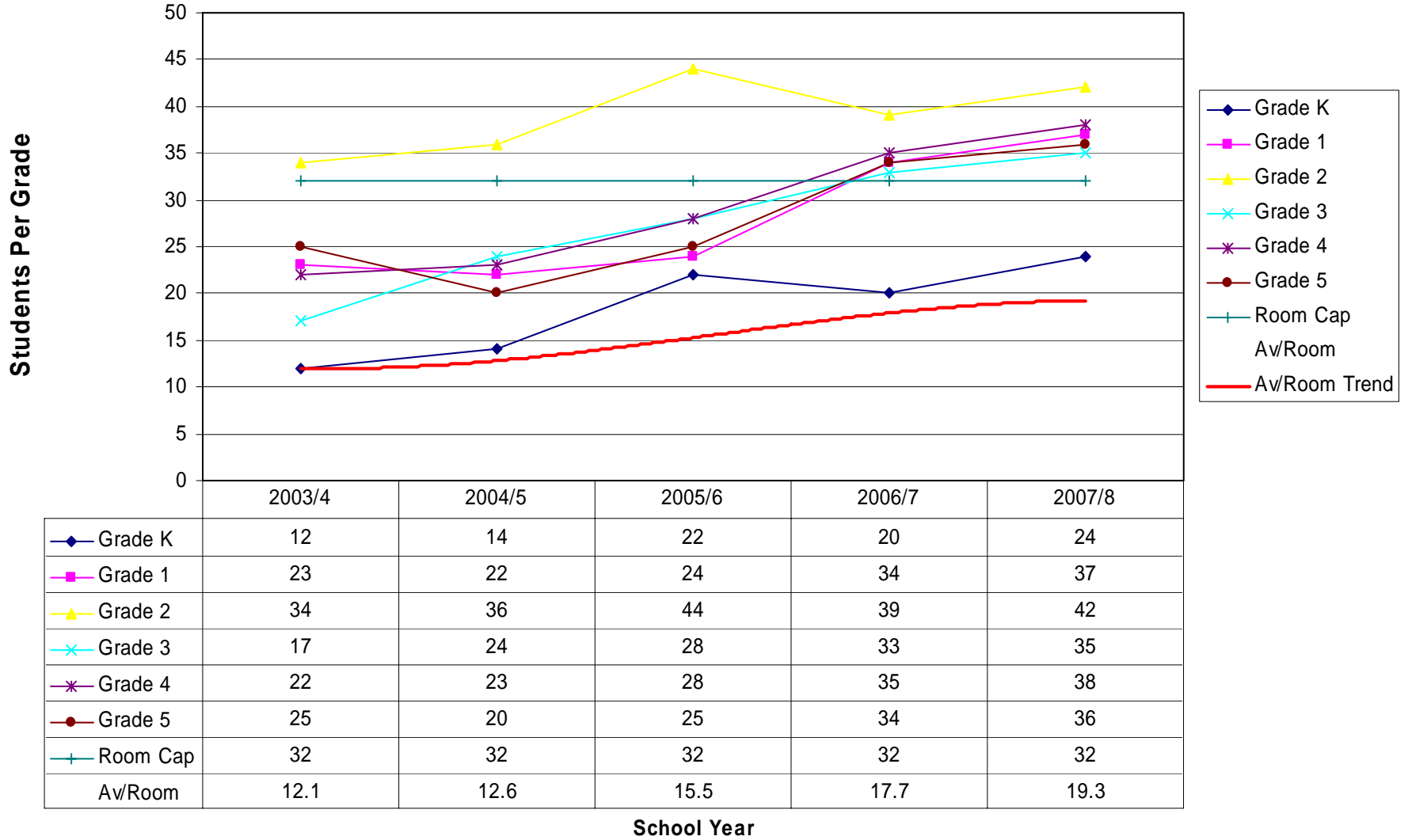
	Sq. Feet	Student Capacity	Sunday	Monday	Wednesday
Parish Center					
Ars A	327	16 Grades K-2			
Ars B	327	16 Grades K-2			
Ars C	327	16 Grades K-2			
Eculy A	320	16 Grades K-2			
Eculy B	320	16 Grades K-2			
VR 1	377	16 Grades 3-5			
VR 2	377	16 Grades 3-5			
VR 3	377	16 Grades 3-5			
VR 4	377	16 Grades 3-5			
VR 5	386	16 Grades 3-5			
VR 6	386	16 Grades 3-5			
FLC					
Teen	540	22 Grades 6-8			
Sullivan	575	23 Grades 6-8			
Theater & Gym					
Total Classrooms			12	6	6 + Gym

CCD Classroom Assignments

Grade	Sunday	Monday	Wednesday
K	Ars A	Ars A	
1	Ars B	Ars B/C	
	Ars C		
2	Eculy A	Eculy A/B	
	Eculy B		
3	VR 1	VR 1/3	
	VR 2		
4	VR 3	VR 2/4	
	VR 4		
5	VR 5	VR 5	
	VR 6		
6			Eculy A/B
			Ars B/C
7			VR 1/3
			VR 2/4
8			FLC Teen
			FLC Sullivan
HS			Theater & Gym

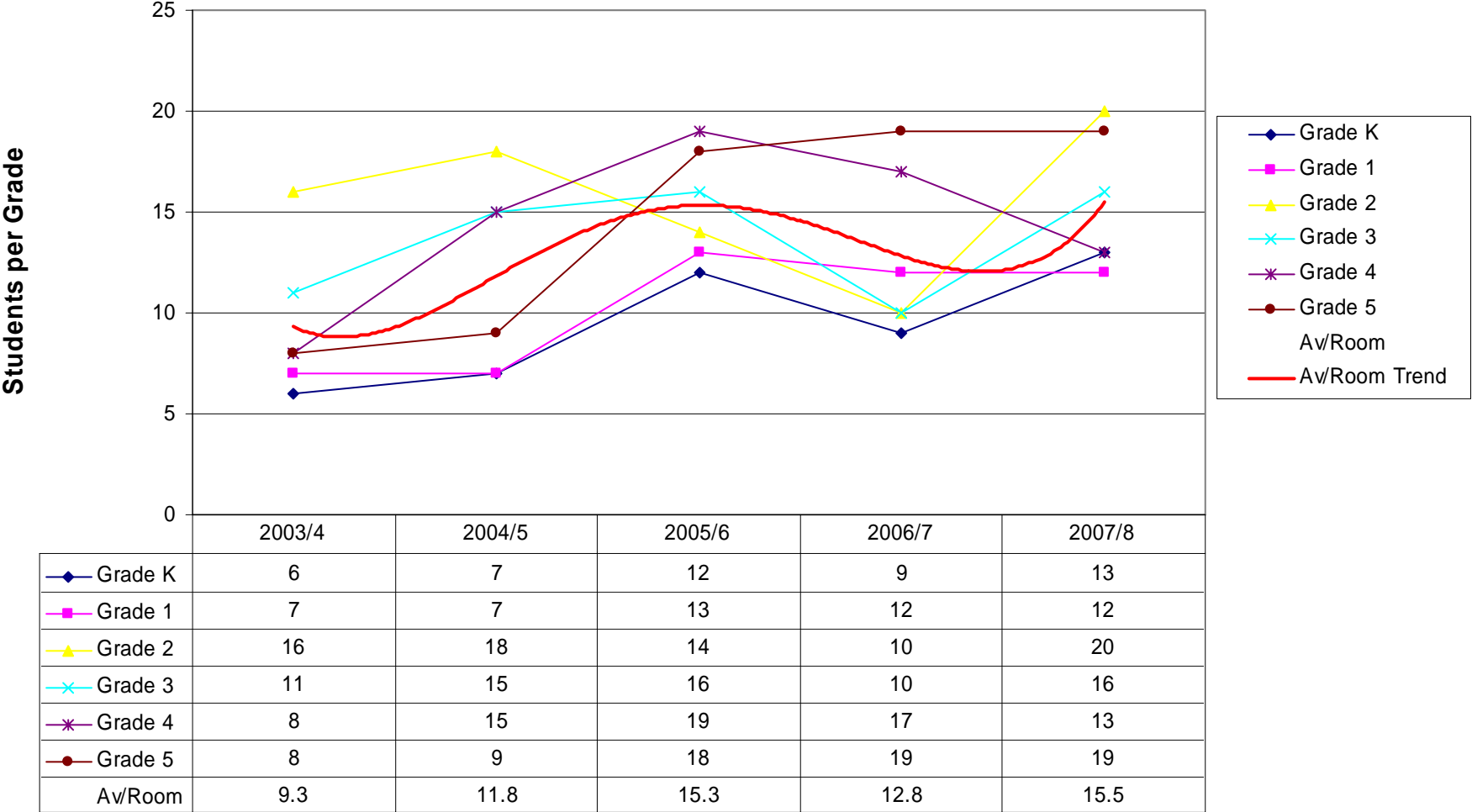
Sunday CCD Class Size

(11 Classrooms: Two classrooms per grade, except Kindergarten)



Monday CCD Class Size

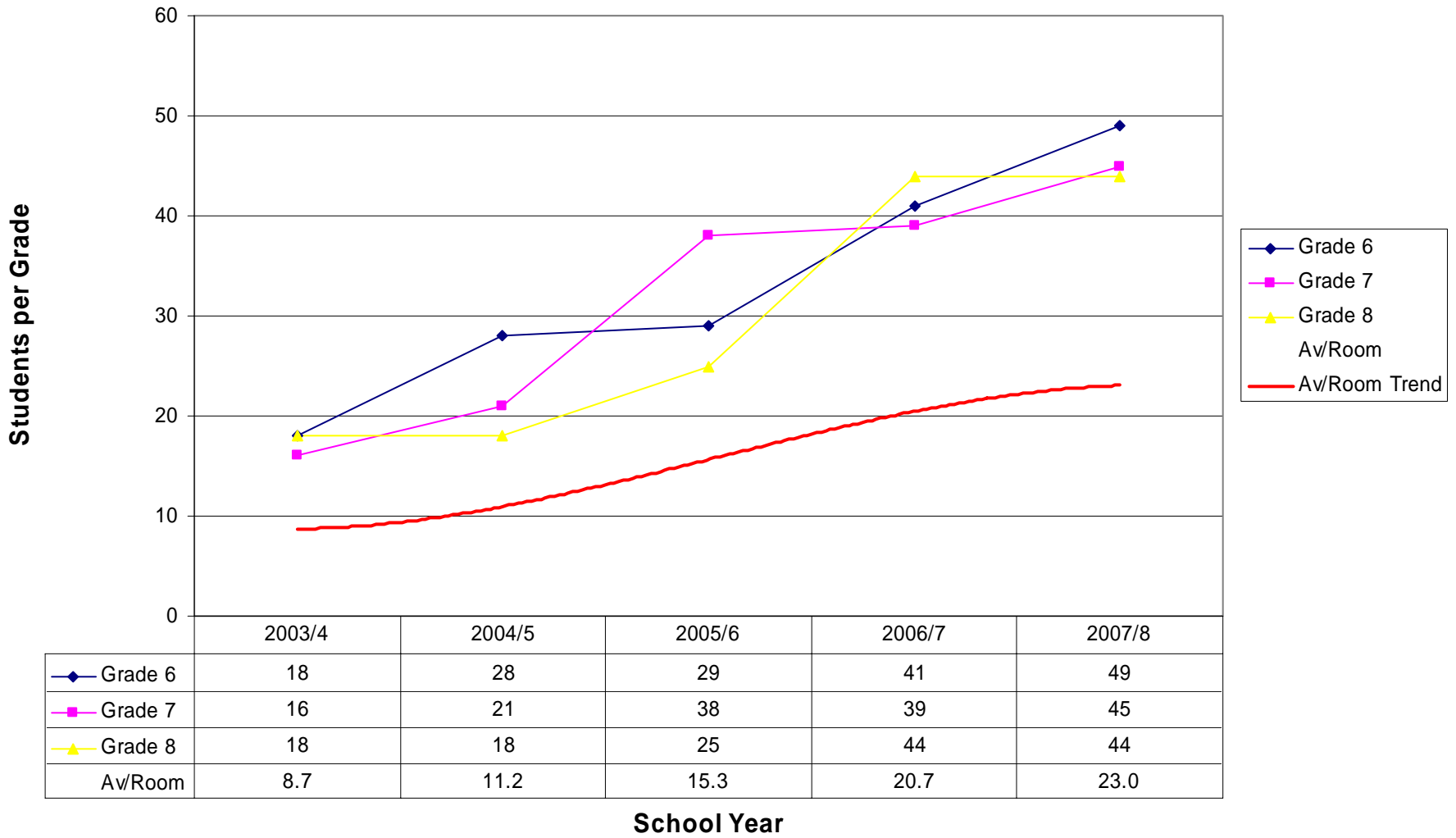
(One classroom per grade)



School Year

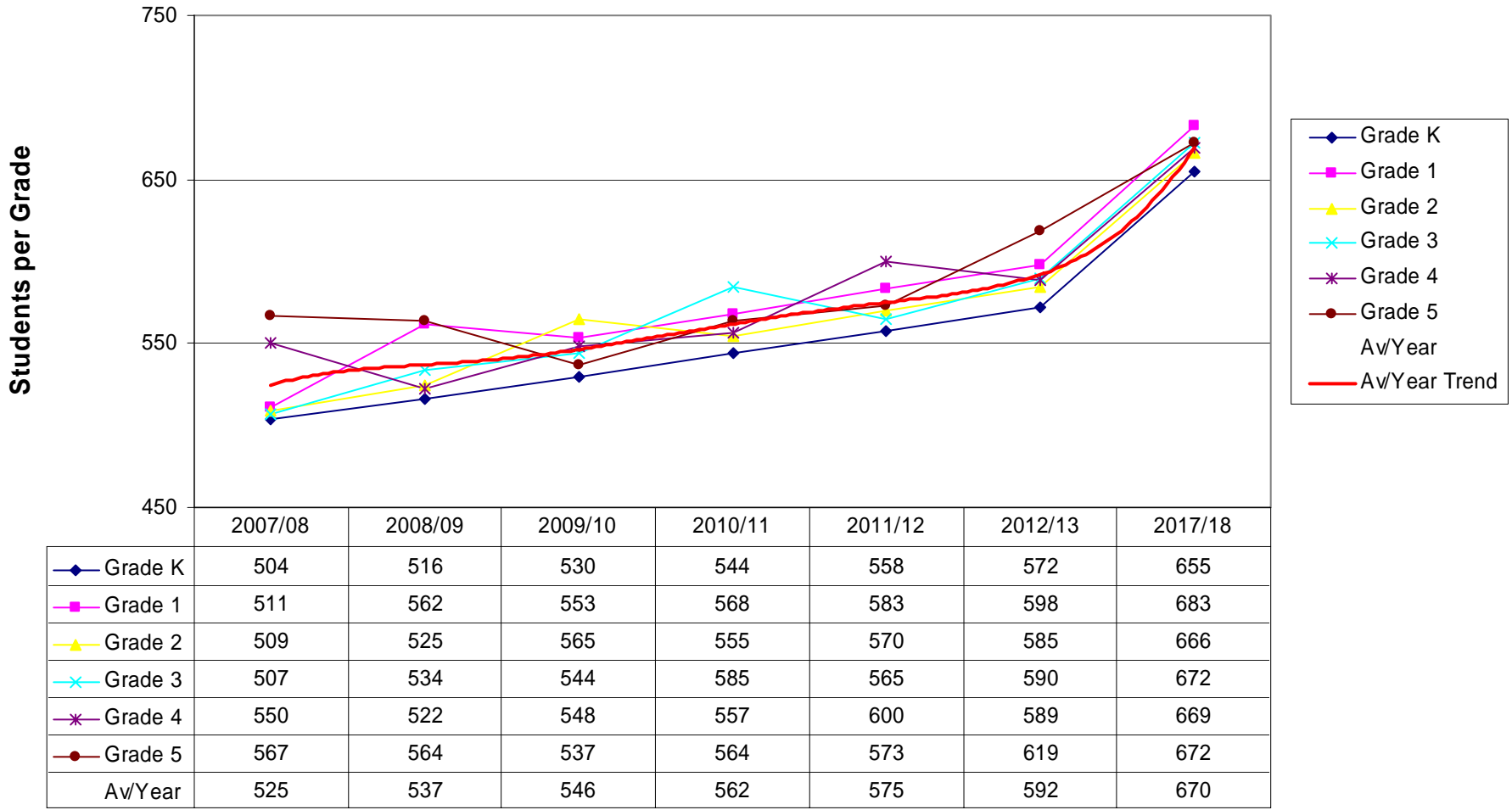
Wednesday CCD Class Size

(Two classrooms per grade)



CCPS Elementary Enrollment Projections

Calvert, Barstow, Huntingtown, Mutual, Plum Point, St. Leonard
Source: CCPS School Facilities Master Plan 2010, Draft 23 April 2008

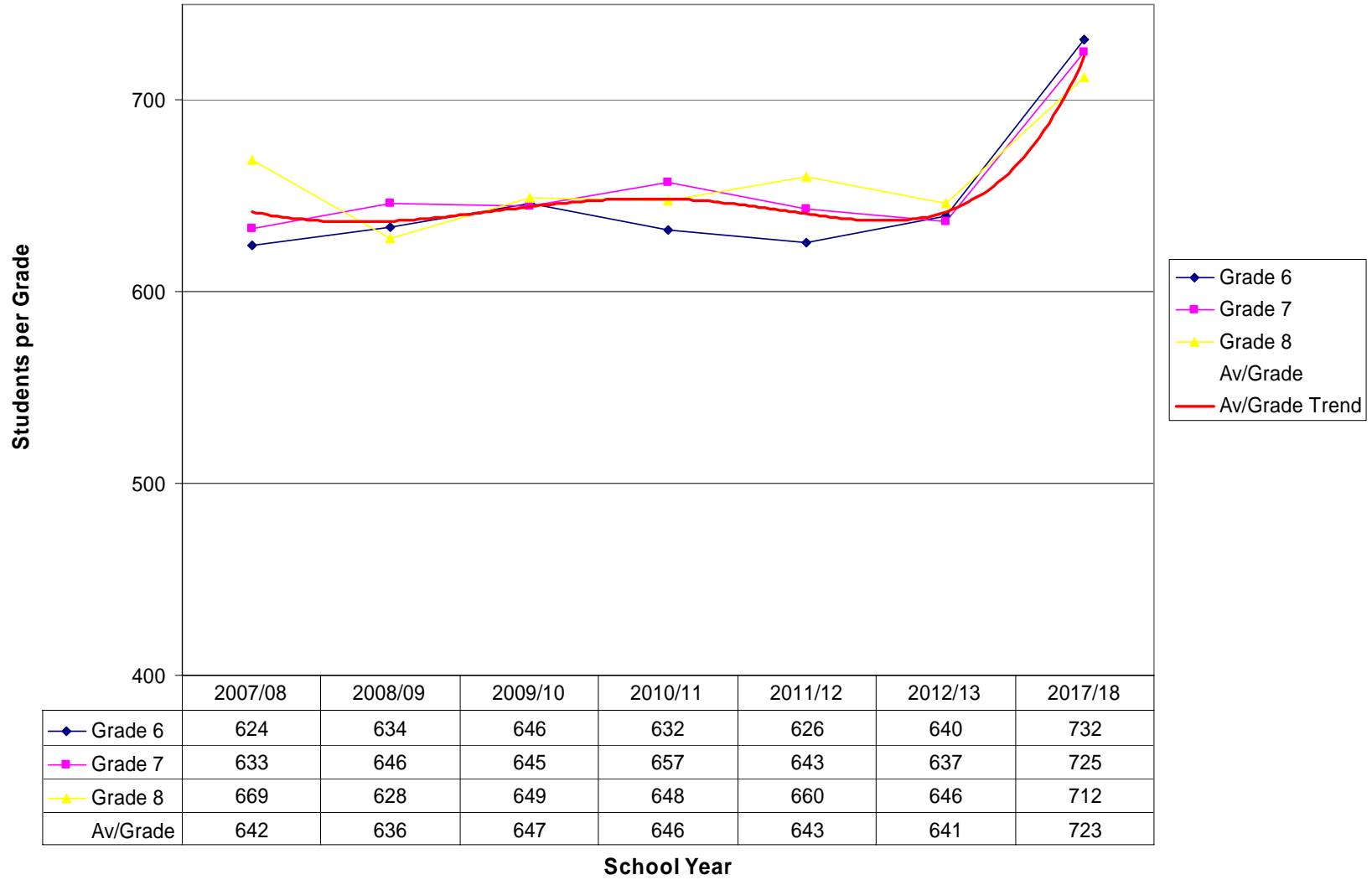


School Year

CCPS Middle School Enrollment Projections

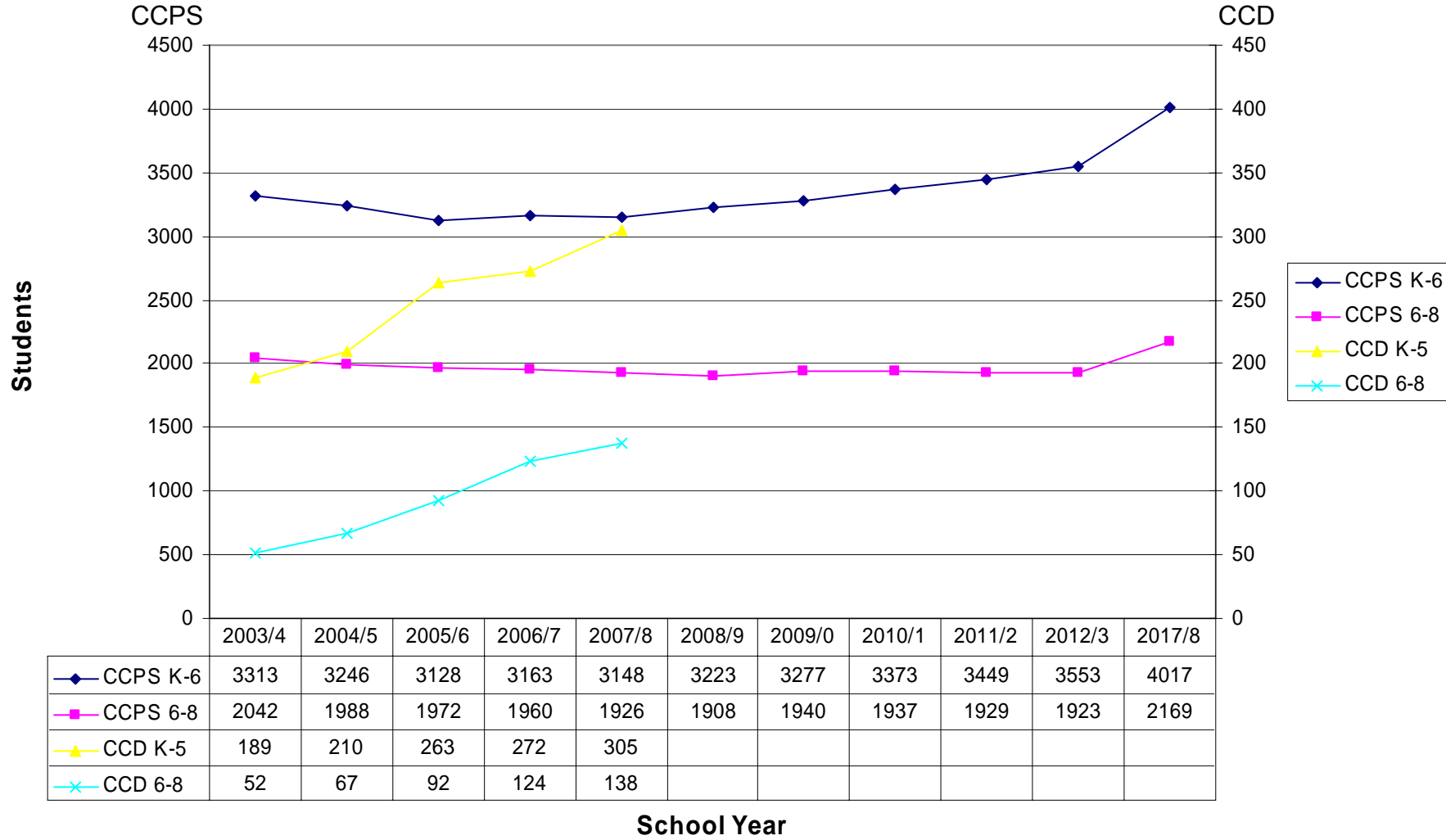
(Calvert, Plum Point and Southern Middle Schools)

Source: CCPS Facilities Master Plan 2010, Draft 23 April 2008

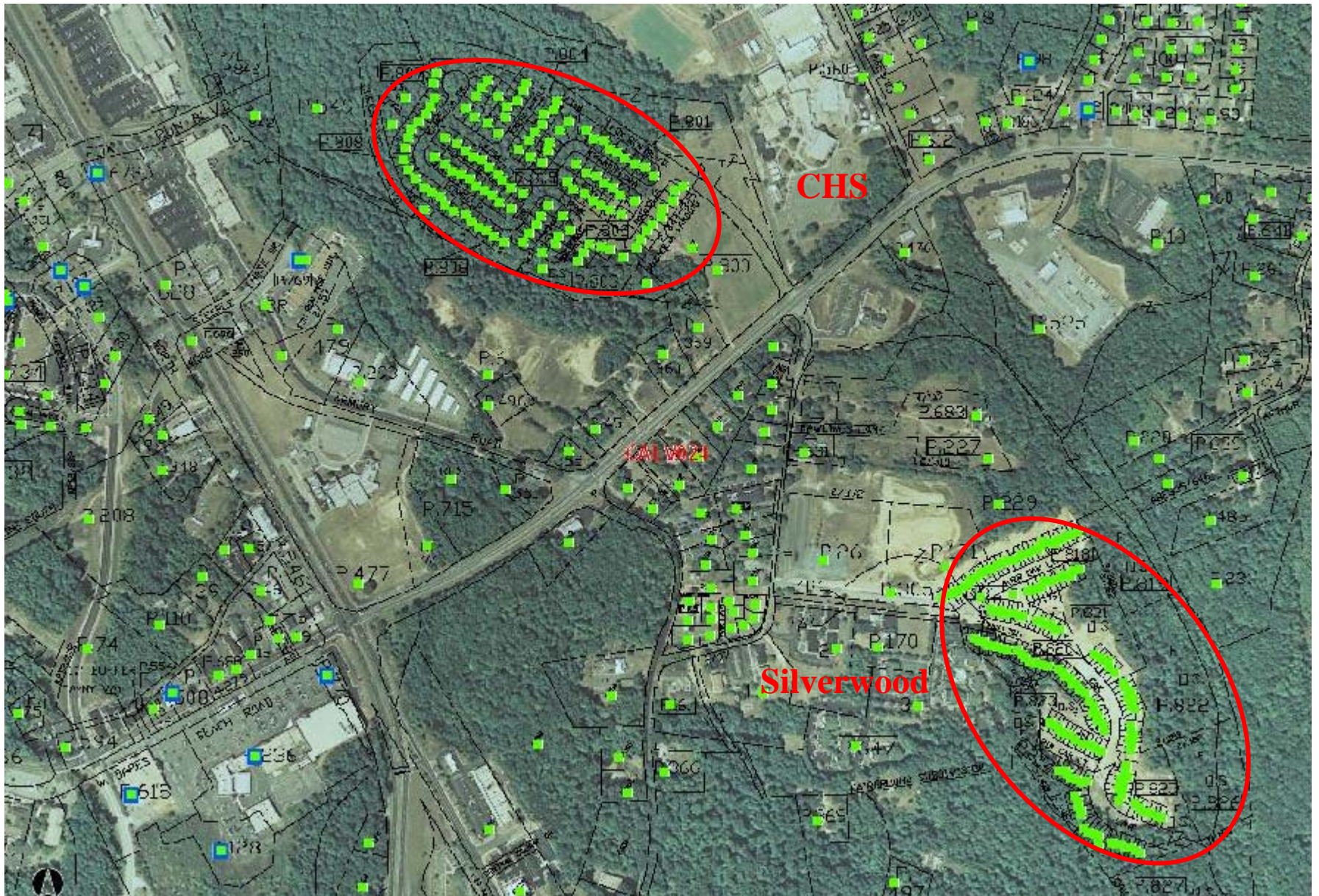


Student Enrollment Growth

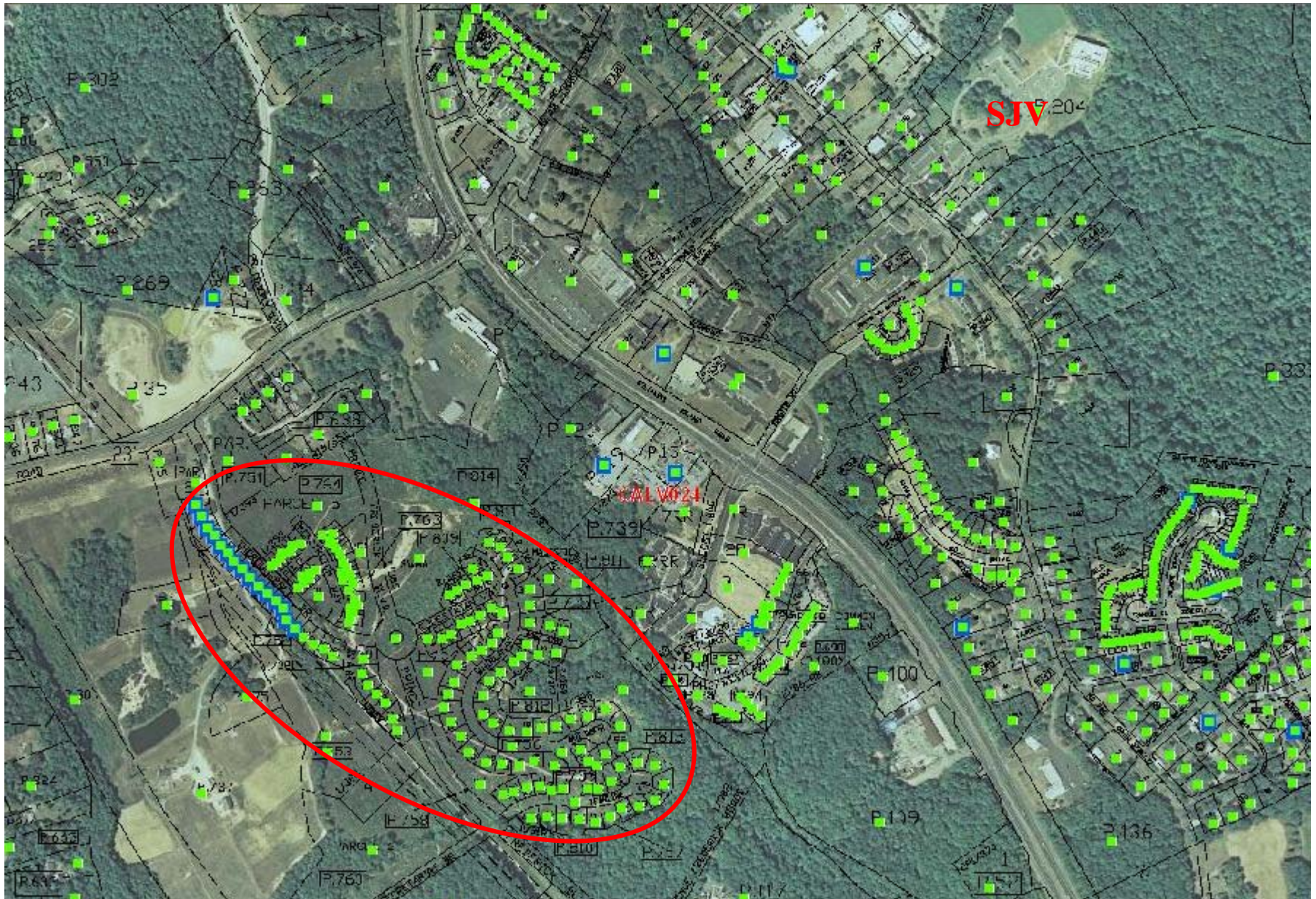
(CCPS Mid County Elementary and Middle Schools)
2003/4 to 2007/8 Actual, 2008/9 to 2017/8 CCPS Estimates



Dares Beach Rd. & Silverwood La. New Homes



RT 231 New Homes



Projected CCD Student Growth

600+ new homes within 5 years

CCPS estimate 1.1 students/house, grades K-12:	660 additional students
25% Catholic households, grades K-5:	76 additional CCD students
70% attend Sunday CCD:	53 students, 8.8/grade, 4.4/classroom
30% attend Monday CCD:	23 students, 3.8/grade, 1.9/classroom

Sunday CCD average class size 2007/08:	19.3 students
2012/13:	23.7 students

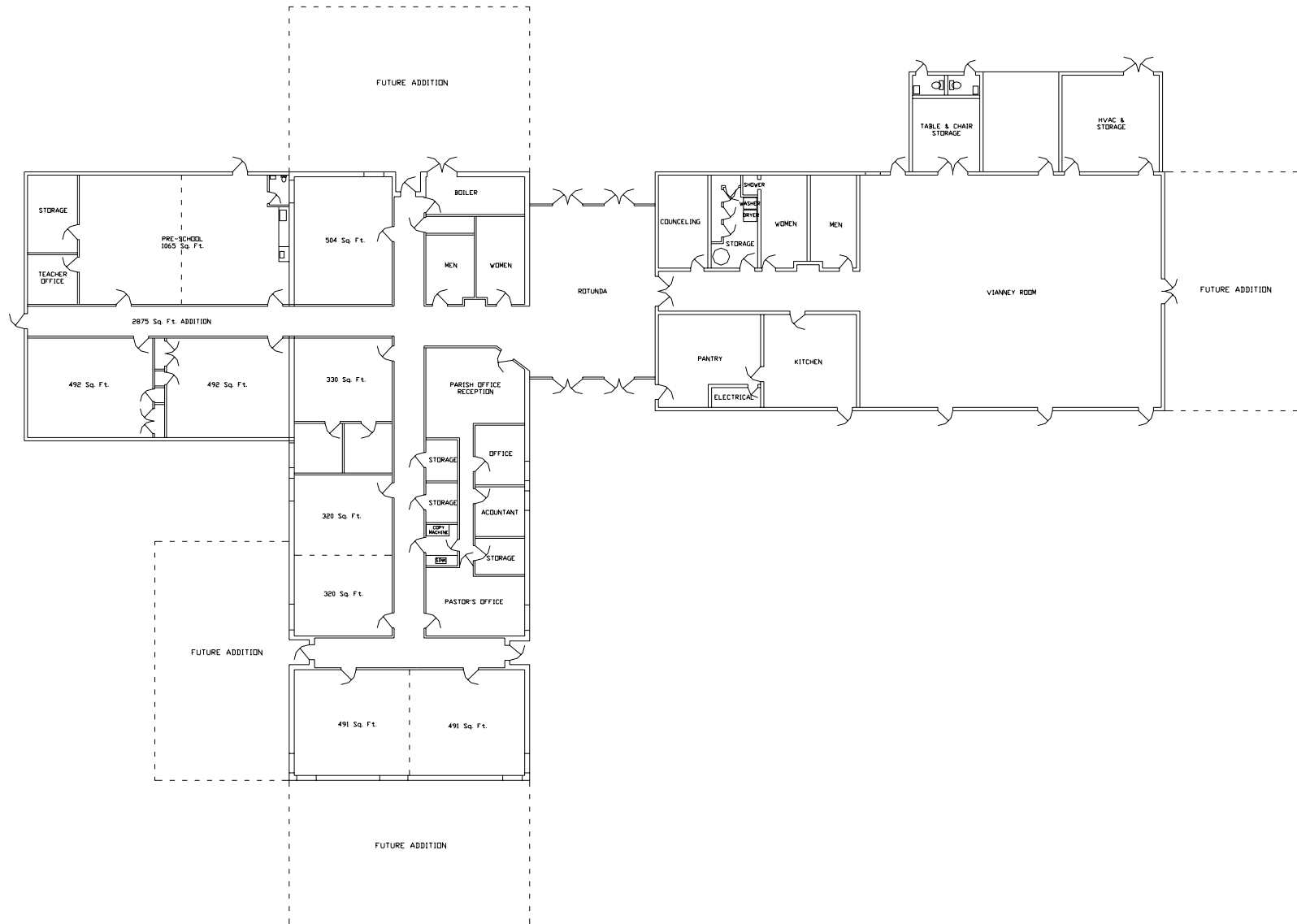
Monday CCD average class size 2007/08:	15.5 students
2012/13:	17.4 students

Parish Center Renovation Goals

- Classrooms sized for 20 CCD students
- Improved acoustic isolation between classrooms
- Expand and consolidate Pre-School space
- Improved kitchen functionality
- Upscale Vianney Room appearance
- Dedicated storage for parish organizations
- Improve energy efficiency
- Provide for future expansion



Parish Center Recommendations



Parish Center Recommendations

1. Remodel the Vianney Room for a more upscale appearance. This would include new windows, doors, ceiling, floor, lighting, and wall finishes. Installation of room dividers is not recommended because the available space in the Family Life Center and Church basement that can be used for Sunday CCD classes. Expansion of the Vianney Room is not recommended at this time, but should be a consideration as part of the remodeling design.
2. Add a table and chair storage room to the Vianney Room similar to that proposed in the Patuxent Architects' plan. Also part of this addition would be two exterior accessible toilet rooms.
3. Remodel the kitchen and pantry for expanded cooking space and countertops. Build closets in pantry for dedicated storage for Hospitality and Bereavement groups.
4. Remodel the store room to include a shower for ladies restroom, washer, dryer and closet storage for parish organizations.
5. Remodel parish office space for relocation of Pastor's office, coffee mess and copy machine.

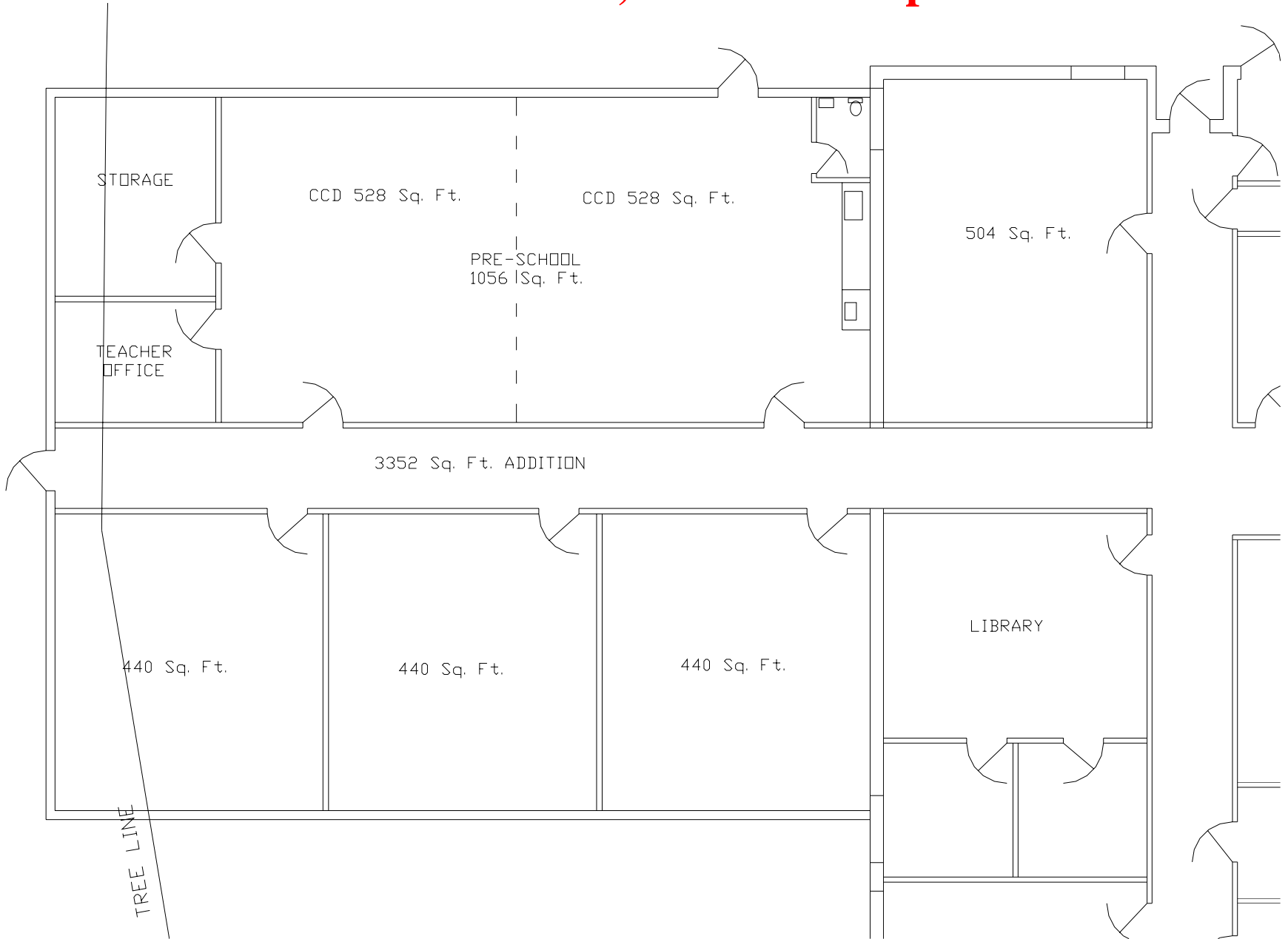
Parish Center Recommendations

6. Remodel Ars and Eculy Rooms for better acoustic isolation between rooms. Install a moveable partition in the Ars room to divide the space into two 500 square foot classrooms for CCD. Upgrade the partition in the Eculy Room for better acoustic isolation.
7. Construct a building addition of approximately 2,900 square feet to provide two 500 square foot classrooms and an expanded Pre-School space with office, storage, and in-room toilet and sinks. Install a moveable partition in the Pre-School room to divide the space into two classrooms for CCD use.
8. Install a display case in rotunda lobby for displaying youth and Scout organizations awards.
9. If additional CCD classrooms are required after the recommended expansion of the Parish Center, the CCD program will need to add an additional class time on Sunday morning.

Parish Center Improvement Cost Estimates

Parish Center	Low Estimate	High Estimate	Project Leader
Renovation Architecture Fees	\$18,000	\$22,000	
Vianney Room Makeover - Contractor	\$60,000	\$90,000	
Kitchen Renovation - Contractor	\$25,000	\$40,000	
Ars, Eculy Classroom Renovations - Contractor	\$15,000	\$25,000	
New Addition - Contractor	\$250,000	\$350,000	
Women's Shower, Washer, Dryer - Contractor	\$7,000	\$10,000	
Office Renovations - Material Cost	\$800	\$900	
Labor Cost	\$1,500	\$2,500	
Rotunda Display Case - Material Cost	\$900	\$1,100	
Labor Cost	\$1,300	\$1,500	
Total	\$379,500	\$543,000	

Alternate Pre-School, Classroom Option

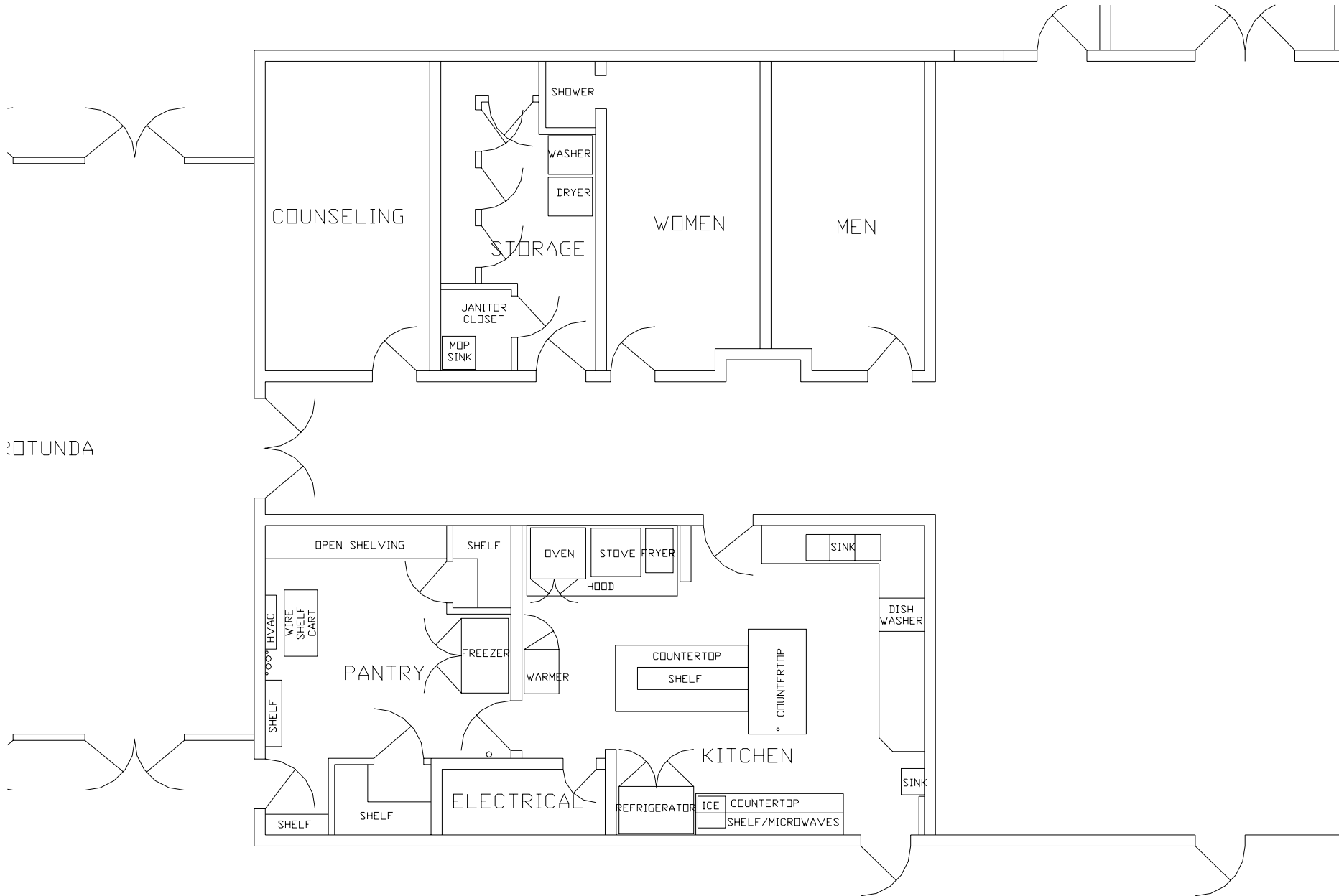








Kitchen & Storage Improvement Option



**St. John Vianney Church
Facility Improvements**

9/8/08

ID	Task Name	Duration	Start	Finish	2009												2010														
					Jul	Aug	Sep	Oct	Nov	Dec	Jan	Feb	Mar	Apr	May	Jun	Jul	Aug	Sep	Oct	Nov	Dec	Jan	Feb	Mar	Apr	May	Jun	Jul	Aug	Sep
1	CHURCH	115 days	8/18/08	1/23/09																											
2	Confessional Renovation	30 days	10/6/08	11/14/08																											
3	Speakers for Nursery	3 days	11/3/08	11/5/08																											
4	Tower Room Ceiling	10 days	12/8/08	12/19/08																											
5	Altar Server Room Ceiling	10 days	1/12/09	1/23/09																											
6	Basement Closet Shelves	70 days	8/18/08	11/21/08																											
7	KofC, Conference Room	30 days	8/18/08	9/26/08																											
8	Nursery Mech. Room	2 days	8/18/08	8/19/08																											
9	Columbus Rm, Nursery	15 days	11/3/08	11/21/08																											
10	Lawn Sprinkler Water Meter	2 days	9/29/08	9/30/08																											
11	Chapel Step Lighting	5 days	10/6/08	10/10/08																											
12																															
13	FAMILY LIFE CENTER	145 days	8/25/08	3/13/09																											
14	Elevate Stage Light Bar Winches	1 day	8/25/08	8/25/08																											
15	Mtg Room Markerboards	1 day	11/3/08	11/3/08																											
16	Mtg Room Chair Rail	5 days	1/12/09	1/16/09																											
17	Gym Ceiling Acoustic Panels	5 days	10/20/08	10/24/08																											
18	Gym Dimmable Lighting	5 days	1/19/09	1/23/09																											
19	Automated External Defibrillator	2 days	11/10/08	11/11/08																											
20	Trash Can Storage Enclosure	10 days	3/2/09	3/13/09																											
21	Piano Storage Alcove	10 days	1/19/09	1/30/09																											
22																															
23	PARISH CENTER	495 days	9/16/08	8/9/10																											
24	Office Renovations	10 days	11/3/08	11/14/08																											
25	Kitchen, Storage Renovations	40 days	2/2/09	3/27/09																											
26	New Addition	375 days	9/16/08	2/22/10																											
27	Parish Review	60 days	9/16/08	12/8/08																											
28	Architectural & Site Design	90 days	12/9/08	4/13/09																											
29	Bids & Permits	45 days	4/14/09	6/15/09																											
30	Construction	180 days	6/16/09	2/22/10																											
31	Ars & Eculy Renovations	20 days	2/23/10	3/22/10																											
32	Vianney Room Renovation	100 days	3/23/10	8/9/10																											
33																															
34	RECTORY	3 days	10/6/08	10/8/08																											
35	Structural Inspection	3 days	10/6/08	10/8/08																											
36																															
37	ECHO PROPERTY	1 day	8/3/09	8/3/09																											
38	Acquire Property	1 day	8/3/09	8/3/09																											
39																															
40	UTILITY BUILDING	10 days	10/20/08	10/31/08																											
41	Site Assessment	10 days	10/20/08	10/31/08																											